

CENTRON® II METER

WITH NIGHTHAWK RDM 950



Itron C2SXD Meter

2-WAY CELLULAR REMOTE CONTROL METER

The RDM 950 is a point to point wireless remote control two-way residential metering and power management tool,

No Infrastructure build out or maintenance

Allows utility to manage energy not a communications network

Focus capital where it offers the greatest payback

TODAY'S CHALLENGES

- Slow Pay / No Pay
- Inaccessible and Hard to Read Meters
- High Turn Over Locations
- Time of Use



ADVANCED SOLUTIONS

- Bidirectional metering with customer interface
- Demand Response and Load Control
- Voltage monitoring for both engineering and conservation

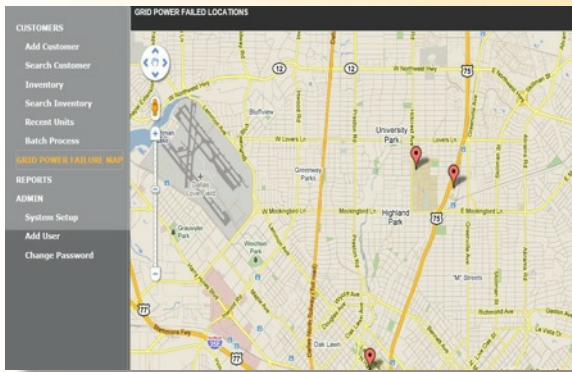
FEATURES:

- Web-Based Remote Read / Disconnect / Reconnect
- ERT Drive-By / Fixed Network (both SCM and IDM)
- Amperage and 30/30 Service Limit Options
- Outage, Tamper and Backfeed Notification Alerts With Mapping
- Changeable Threshold "Sag-Swell" Voltage Alerts
- Time-Of-Use Data for Load Profiles, Demand Billing
- Full Reporting Available
- On-Demand or Pre-Scheduled Batch Commands
- Demand Response Program to Shed Load
- Future-Proofed: Over-the-air Firmware Upgrades
- Service personnel capability to locally Zero the Meter

BENEFITS:

- Saves money on expensive truck rolls
- Keeps utility personnel out of harm's way
- Improves service response with outage and voltage alerts with e-mail / cell-phone options
- Service limits let you manage challenging accounts, even during moratorium periods
- System-wide coverage with no infrastructure build-out enables incremental meter rollouts
- Industry-standard functionality integrates these meters into many billing systems
- Meters will meet growing requirements, as you download and activate additional functionality
- Reduces damaging socket wear & risk of fire

OUTAGE NOTIFICATION ALERTS WITH MAPPING



When Nighthawk meters experience a power outage, they use their “last gasp” stored power (capacitors - no batteries) to notify the online Web system, known as Utility Web-Connect, that “Grid Power Failed”.

Upon receipt of this message, Utility Web-Connect makes a map available online with red balloons showing the addresses which have been entered in the system for the meters reporting an outage.

At the utility’s option, Web-Connect can also issue a text message to a cell-phone or an e-mail to alert utility personnel that meters have reported an outage, all within the first minute of the power outage.

INTEGRATION WITH BILLING SYSTEMS & 3RD - PARTY PRE - PAY SOLUTIONS

Nighthawk’s Web-Connect system can integrate smoothly with a variety of Billing Systems and Pre-Pay solutions (e.g. NISC, PayGo, etc.) using its CSV meter readings upload files and industry standard meter control interfaces.

MEETING STRICT COMPUTER SECURITY REQUIREMENTS

Both Nighthawk’s Utility Web-Connect cloud software and the Nighthawk RDM-950 module inside the Itron C2SXD meter have been designed to meet strict security requirements:

Trust Center: Extensive security measures prevent unauthorized access to customer information within the Utility Web-Connect application and through its Application Programming Interfaces, including industry standard techniques for: Internet access procedures, SSL transaction protection, and content encryption over the cellular network.

Device Level Security: Nighthawk’s cellular communications use a “closed” system in that these SIM cards cannot be called by rogue operators nor can a rogue SIM card function within the Nighthawk device.

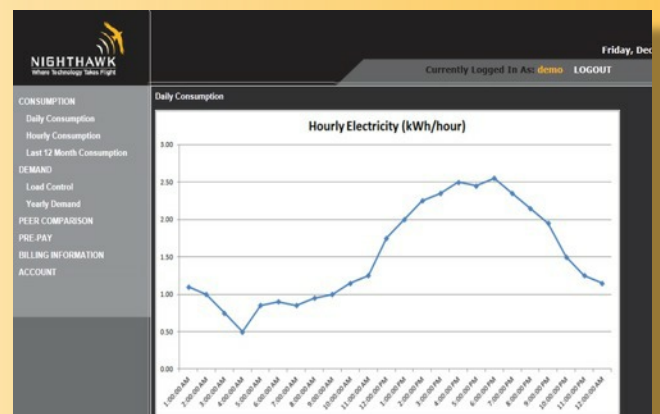
Threat Penetration Testing: Nighthawk’s system is reviewed and tested annually by the High Assurance Computing Center (“HAC-NET”) operated by the Computer Engineering Department of the Bobby B. Lyle School of Engineering at Southern Methodist University in Dallas, Texas. Nighthawk’s Utility Web-Connect system has repeatedly received high marks for its invulnerability to external hacking attacks.

CONSUMER PORTAL WITH USAGE MONITORING

Nighthawk’s new Customer Portal is for electric utilities or solar installation companies where supporting detailed customer knowledge of electricity usage patterns is important for billing, credit or load shedding purposes.

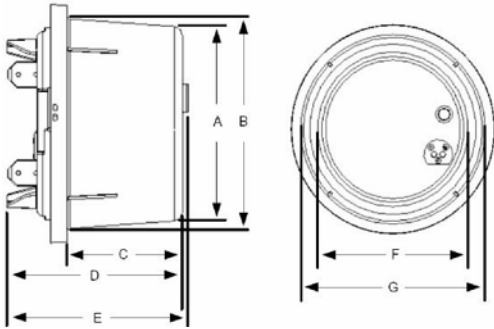
A variety of analytical charts are available by hour, day, or month, as well as peak usage demand calculations.

This Consumer Portal is a “read-only” copy of the usage data and access to the consumer portal does NOT provide any connection to the secured servers actually issuing commands to the meters, which are tightly secured for utility access only.



ABOUT NIGHTHAWK: For two decades, Nighthawk has been designing and manufacturing easy to use “Plug and Play” wireless telemetry to remotely control virtually any electrical device, from any remote location. Our products set the standard for excellence in the areas that matter most to our customers, including technology, ease of use and installation.

TYPICAL MECHANICAL DIMENSIONS



	A	B	C	D	E	F	G
INCH	14.4	6.296	3.472	5.272	5.45	5.677	6.296
CM	5.677	16	8.8	13.4	13.8	14.4	16

TYPICAL WEIGHTS & MEASURES

4 Meters per Carton	16 lbs
96 Meters per Pallet	419 lbs

ORDERING INFORMATION

Part Number	Voltage	Meter Class	Form	Communication and Options
RDM950N	240 V	200	2S	Cellular, Current Limit and Homeowner Reset
RDM952NE	240 V	200	2S	Cellular, ERT Radio, Current Limit, and Homeowner Reset

PRODUCTION SPECIFICATION

Operating Environment	Temperature: -40 ° to +85°	Display Power Requirements	Nine-digit liquid crystal display Annunciator height: 0.088" Six-digit data height: 0.4" Display duration: 1-15 seconds Three-digit code number height: 0.24" 3-segment electronic load indicator Voltage Rating: 120 V, 240 V Operating Voltage: ± 20% (60Hz) Frequency: 60 Hz, (50 Hz) Operating Range: ± 3 Hz
Accuracy	ANSI C12.20 0.5 accuracy class		
Energy Calculation	KWH		
Demand Calculation	Peak		
Power Requirements	Voltage Rating 240 VAC Frequency 60 Hz		
Communications	PCTRB and Carrier Certified		
FCC	Part 15		
Support Meter Forms	Class 200: 2S		